

Is New Jersey America's 'Valley of the Clueless'?

by Diane Sare

March 12—On March 1, 2018, President Vladimir Putin of Russia delivered an extraordinary address, announcing that Russia has moved to restore “parity” in nuclear weapons and defense in the wake of the 2002 United States withdrawal from the 1972 ABM Treaty, and the continued expansion of American and NATO bases right up to Russia’s borders in Europe. Putin announced the development of weapons based on new technologies, such as missiles driven by nuclear-powered engines, whose range is virtually limitless, as is their ability to evade anti-ballistic missile systems. In other words, he announced that all of America’s and NATO’s “new” defense systems, upon which billions of dollars have been spent, are already obsolete.

Equally significant, or more significant in the long run, Putin announced a very ambitious and optimistic program to lift millions more of Russians out of poverty, and to increase life-expectancy (which has risen by seven years since 2000) to over 80. He stressed the importance of nurturing the creativity and great ambitions of the nation’s young people through cultural and scientific initiatives, including designing and building new cities with museums and cultural centers, and new, modern transportation systems connecting them.

The future growth of Russia’s economy, as Putin intends, is coherent with the One Belt One Road Initiative launched by Chinese President Xi Jinping nearly five years ago, which has already transformed the living standards, not only of millions of Chinese,

but millions of other people worldwide, including emphatically on the continent of Africa.

What About New Jersey?

Although a dozen or so New Jersey legislators have visited China over the last few years, whatever they may have learned there does not seem to be affecting the policy debate in New Jersey.

Newly-elected Governor Phil Murphy, formerly of Goldman Sachs, and after that Obama’s Ambassador to Germany, is moving rapidly to plunge the state into a new dark age. The two most devastating initiatives from his office are the legalization of recreational marijuana, and the shutting down of three of the four nuclear power plants in the state. This is particularly humiliating for a state which is home to the Princeton Plasma Physics Lab, which has made breakthroughs in research for the development of fusion energy.

Currently, due to massive investments in natural gas, New Jersey gets “only” 39% of its electricity from nuclear power, and about 56% from natural gas. Nuclear power was over 50% before 2012. The local power company PSE&G has been championing legislation to allow a very small rate increase to subsidize the nuclear plants in order to keep them operating. This was scheduled to come up for a vote last year, but Governor Murphy put it off, and is not pushing for it now. Exelon, the owner/operator of the plants, has warned that if the subsidy is not approved, it will cease to maintain the plants, causing them to close. Obviously, this would be a sub-



cc/Phil Murphy for Governor
New Jersey Governor Phil Murphy, formerly of Goldman Sachs.



cc/Doug Kerr

Nuclear power plant, Salem County, New Jersey.



PPPL Communications/Elle Starkman

National Spherical Torus Experiment, Princeton Plasma Physics Lab.

stantial loss of power-supply for the state, and will be still more devastating if there is a move to restore the formerly huge manufacturing and machine-tool capability in New Jersey, as there must be. There will simply be no power available for such activity.

Despite the evidence coming in from the State of Colorado, which legalized recreational marijuana four years ago, Governor Murphy is committed to legalizing pot in New Jersey, and cites not just the revenue but “social justice.” In Colorado, marijuana is involved in [one of every five fatal car accidents](#), and pedestrian deaths have increased by 16%. Sixty percent of the new Colorado marijuana shops are in minority neighborhoods, and “emergency poison control calls for children, including toddlers, are up 150%.”

Are N.J. Officials Already High?

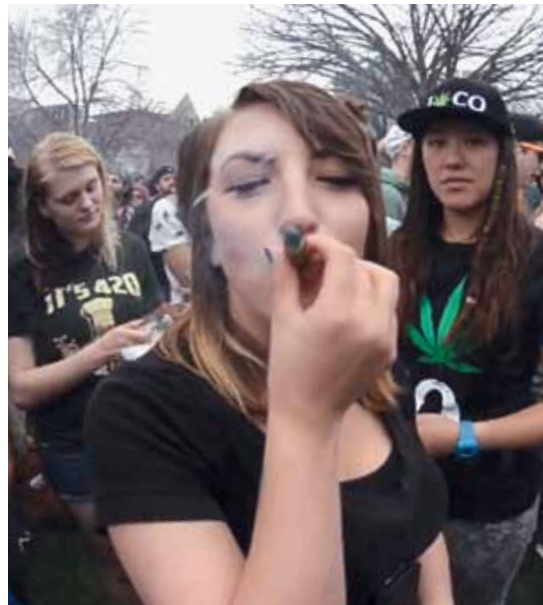
The already horrific state of the local infrastructure has been referenced before in *EIR*. During a recent heavy snow-

storm, two major highways—Routes 280 and 287—were somehow not plowed, resulting in over 530 accidents and over 1,000 calls from trapped drivers, during just a 15-hour period.

Further, it should also be noted that New Jersey Transit has thus far failed to comply with installation of Positive Train Control technology on every commuter car for safety. For that reason, as of Dec. 31, Manhattan’s Penn Station, whose tracks are run by Amtrak, will not allow NJ Transit trains to cross the Hudson River. Amtrak has told passengers that they can switch to Amtrak trains on the New Jersey side of the river—but what a mess!

Perhaps Governor Murphy thinks that if we all smoke a little weed, we won’t notice that we are freezing in the dark, while stuck in our drive-ways!

Hello, all fellow New Jerseyans, and all Americans, for that matter! Look at China and Russia! Life doesn’t have to be this way! Isn’t it time that you listened to LaRouche?



YouTube

Denver, Colorado Marijuana Festival, 2014.